



What should we do ?

ASTHO's presidential
challenge:
To Advance the Reintegration
of
Public Health and
Health Care

Total Population Health



- **Vision**

Healthy people thriving in a nation free of preventable illness and injury

- **Mission**

Transforming public health within states and territories to help members dramatically improve health and wellness

Association of State and Territorial Health Officials Strategic Map: 2010–2012

Strengthen State/Territorial Public Health Effectiveness in Improving Health Outcomes

Serve as Collective
Voice and “Go
To” Resource
For S/T Public
Health

Strengthen
State-Based
Public Health
Practice

Support S/T
Health Official
Effectiveness
And Success
Continuously

Increase
Flexible,
Sustainable
ASTHO
Resources

Continue to
Increase ASTHO
Effectiveness

Promote equity in health

Align the governmental public health enterprise across local, state and federal sectors

Improve information generation and management to strengthen decision making

State Health Officials

- State and territorial health officials have the ultimate responsibility for improving the health of the American people.
- As Health agency leaders, we work with governors, legislators, and fellow agency heads to advance health policy and initiatives throughout state government to create better health outcomes.



President's Challenge Draft Metric:

Every State and Territory will identify at least one successful experience that takes full advantage of the integration of Public Health and Health Care Delivery, decode its key elements for success and help us all to learn from it





Graphic source: calledintowork.com

FOR THE PUBLIC'S HEALTH

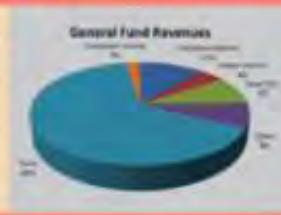
Investing in a Healthier Future



Calendar No. 110

2011 Calendar	2012 Calendar	2013 Calendar
11.000	11.000	11.000

DEPARTMENT OF LABOR, HEALTH AND HUMAN SERVICES
NEW AND REVENUE, AND RELATED ACCOUNTS
FISCAL YEAR 2013



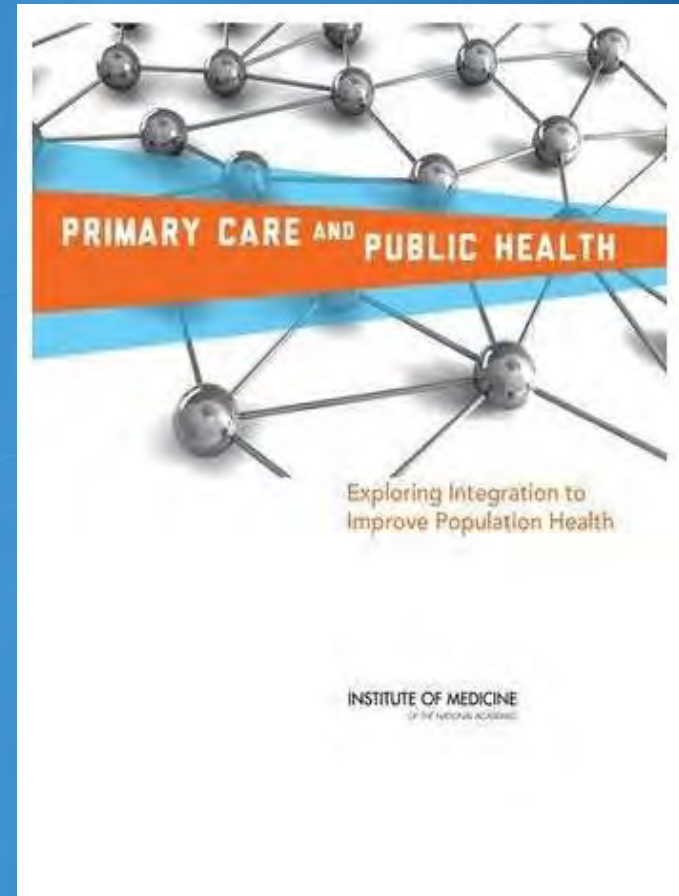
INSTITUTE OF MEDICINE
OF THE NATIONAL ACADEMIES

Institute of Medicine Report

March 2012

Primary Care and Public Health

*Exploring Integration to
Improve Population
Health*



This PDF is available from The National Academies Press at http://www.nap.edu/catalog.php?record_id=13444

Best Care at Lower Cost: The Path to Continuously Learning Health Care in America

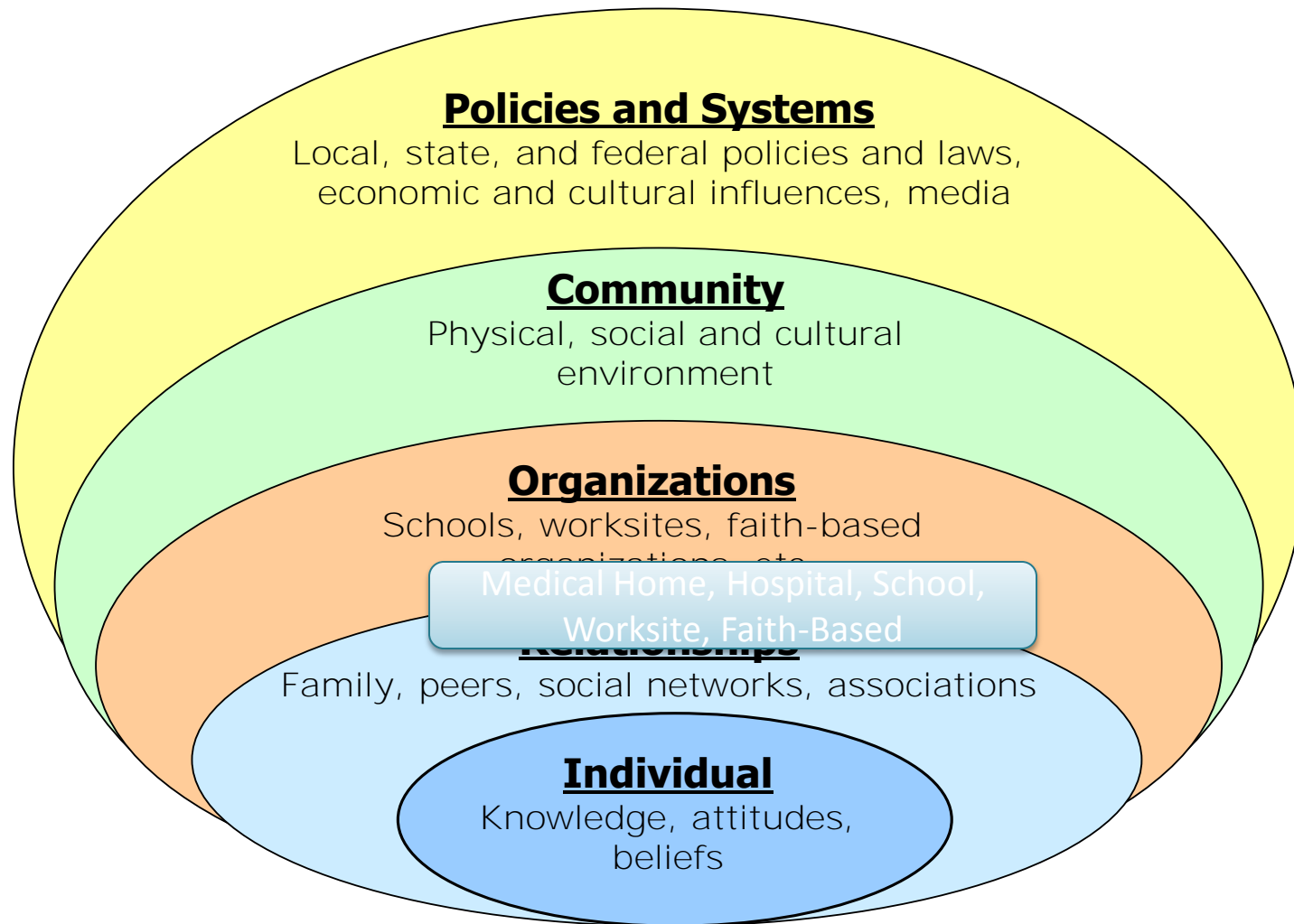
BEST CARE AT LOWER COST

The Path to Continuously Learning
Health Care in America

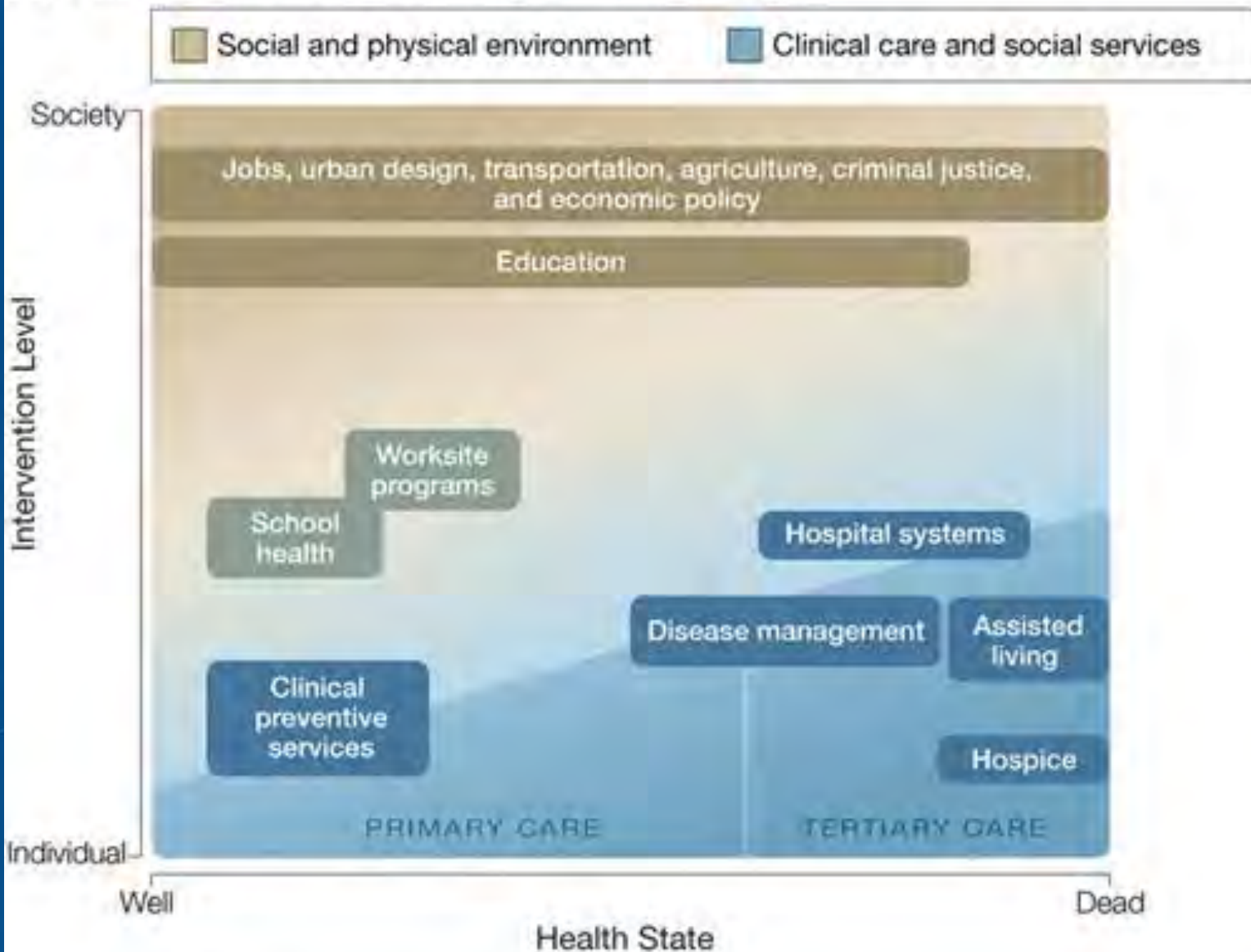
INSTITUTE OF MEDICINE
OF THE NATIONAL ACADEMIES

Mark Smith, Robert Saunders, Leigh Stuckhardt, J. Michael McGinnis,
Editors; Committee on the Learning Health Care System in America;
Institute of Medicine

System Approach to Health Transformation

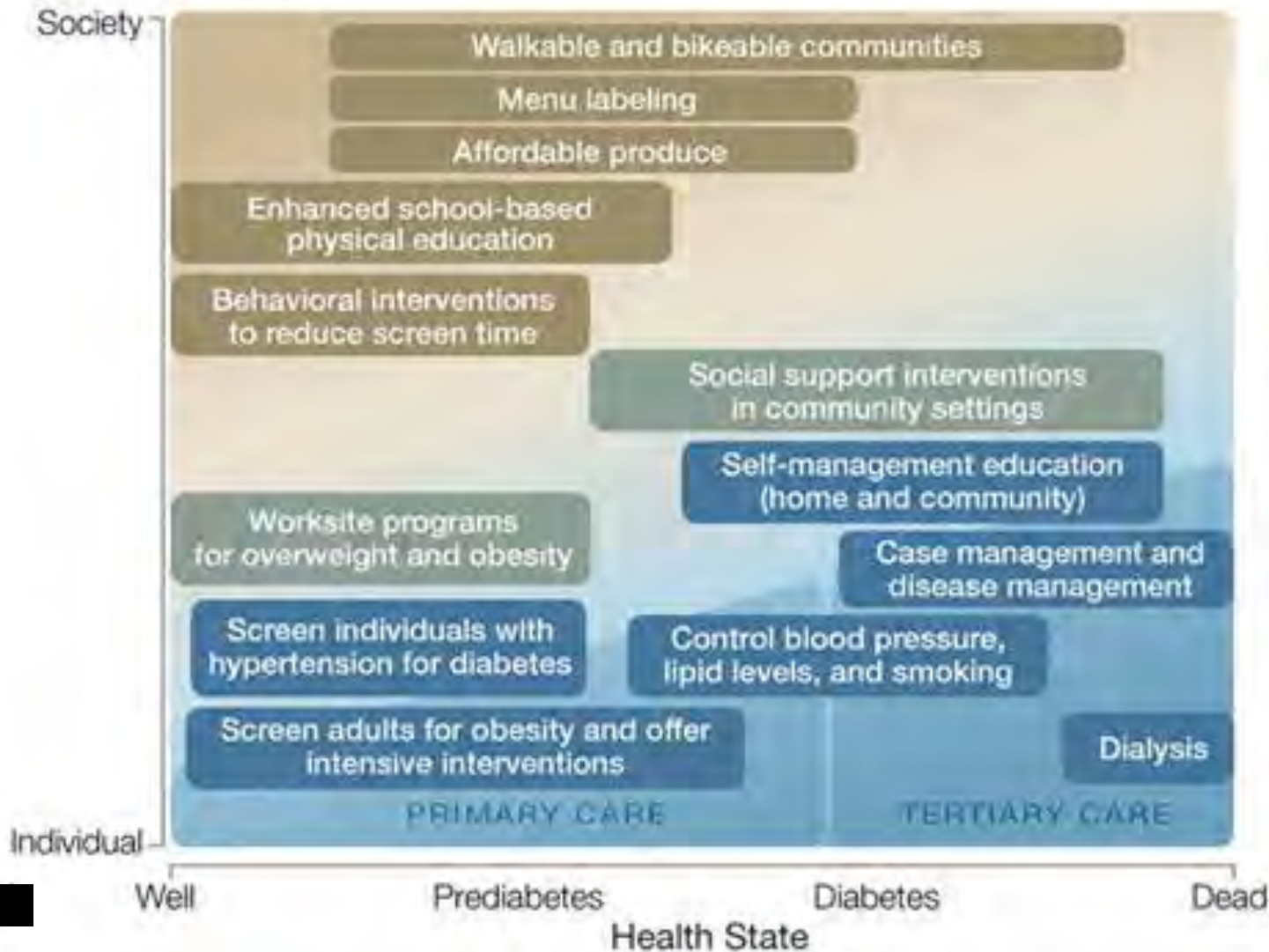


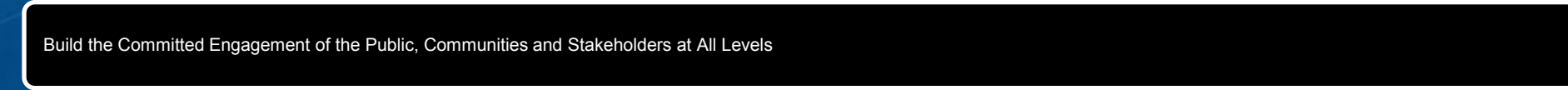
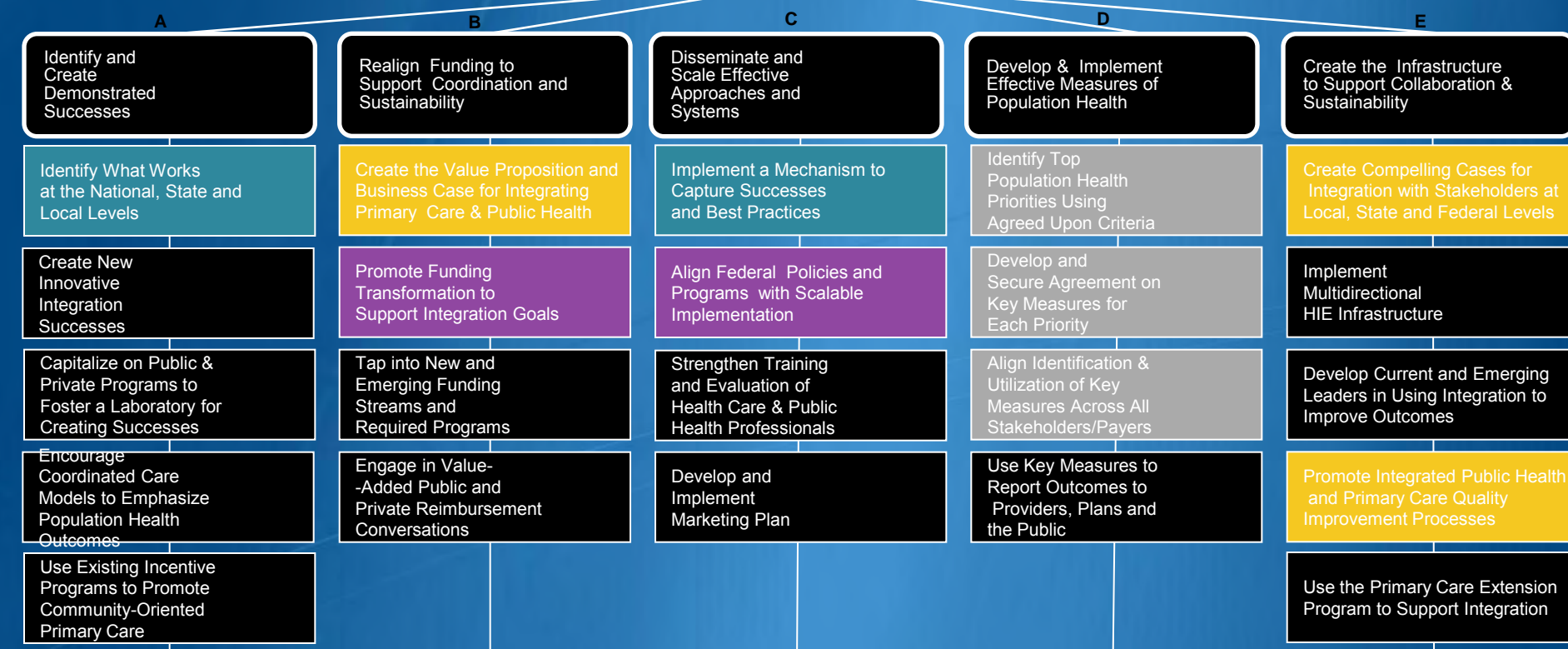
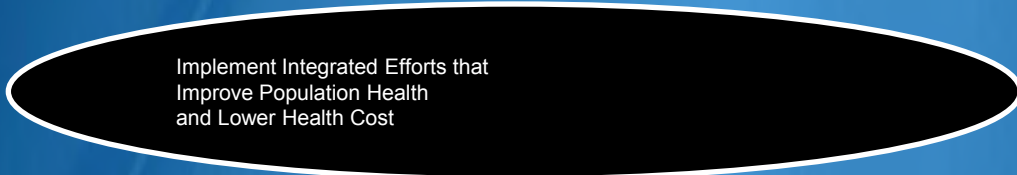
A General model of health and improvement strategies



B Representative model as applied to type 2 diabetes

Social and physical environment
 Clinical care and social services





Devise and Maintain a clearly stated, focused strategy.

Primary Care and Public Health Integration
Strategic Map: 2012-2014

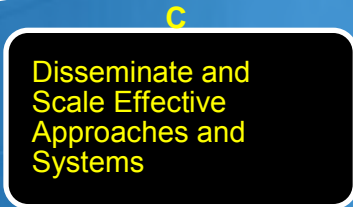
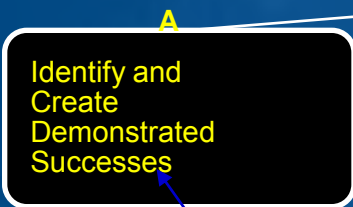
Draft
07/26/12

Implement Integrated Efforts that
Improve Population Health
and Lower Health Cost

Central Challenge

Primary Care and Public Health Integration
Strategic Map: 2012-2014

Draft
07/26/12



Strategic Priorities



A

B

C

D

E

Identify and Create Demonstrated Successes

Realign Funding to Support Coordination and Sustainability

Disseminate and Scale Effective Approaches and Systems

Develop & Implement Effective Measures of Population Health

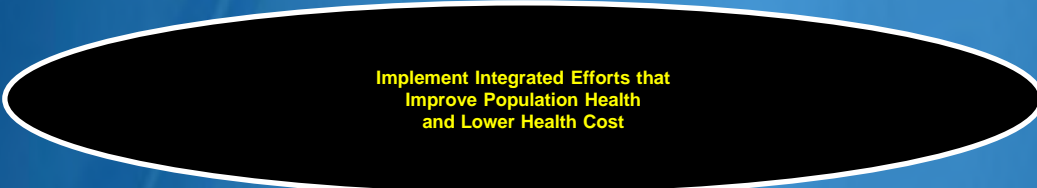
Create the Infrastructure to Support Collaboration & Sustainability

Strategic Priorities

Cross-Cutting Strategic Priorities

Build the Committed Engagement of the Public, Communities and Stakeholders at All Levels

Expand and Strengthen Collaboration and Partnerships



A

B

C

D

E

Identify and Create Demonstrated Successes

Realign Funding to Support Coordination and Sustainability

Disseminate and Scale Effective Approaches and Systems

Develop & Implement Effective Measures of Population Health

Create the Infrastructure to Support Collaboration & Sustainability

Identify What Works at the National, State and Local Levels

Create the Value Proposition and Business Case for Integrating Primary Care & Public Health

Implement a Mechanism to Capture Successes and Best Practices

Identify Top Population Health Priorities Using Agreed Upon Criteria

Create Compelling Cases for Integration with Stakeholders at Local, State and Federal Levels

Create New Innovative Integration Successes

Promote Funding Transformation to Support Integration Goals

Align Federal Policies and Programs with Scalable Implementation

Develop and Secure Agreement on Key Measures for Each Priority

Implement Multidirectional HIE Infrastructure

Capitalize on Public & Private Programs to Foster a Laboratory for Creating Successes

Tap into New and Emerging Funding Streams and Required Programs

Strengthen Training and Evaluation of Health Care & Public Health Professionals

Align Identification & Utilization of Key Measures Across All Stakeholders/Payers

Develop Current and Emerging Leaders in Using Integration to Improve Outcomes

Encourage Coordinated Care Models to Emphasize Population Health Outcomes

Engage in Value-Added Public and Private Reimbursement Conversations

Develop and Implement Marketing Plan

Use Key Measures to Report Outcomes to Providers, Plans and the Public

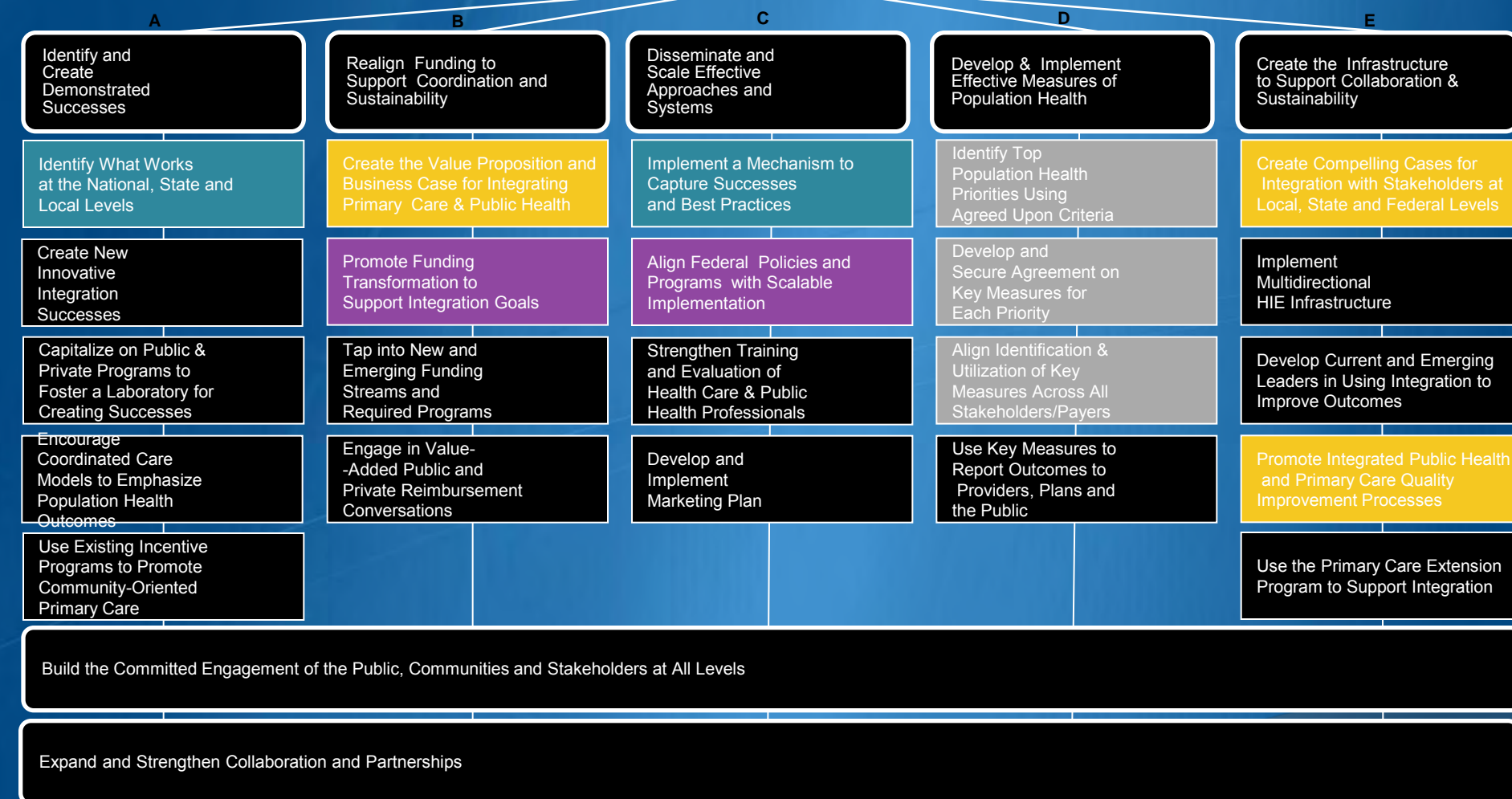
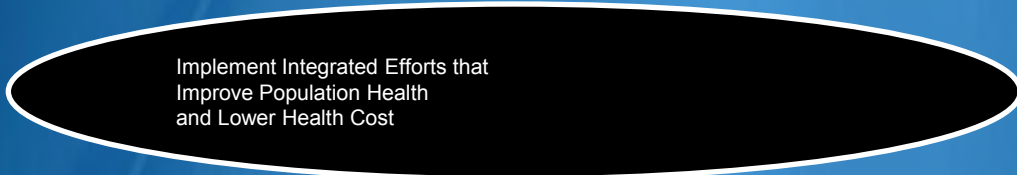
Promote Integrated Public Health and Primary Care Quality Improvement Processes

Use Existing Incentive Programs to Promote Community-Oriented Primary Care

Use the Primary Care Extension Program to Support Integration

Build the Committed Engagement of the Public, Communities and Stakeholders at All Levels

Expand and Strengthen Collaboration and Partnerships



Develop and maintain flawless operational execution

Tracks of Work

- Value Proposition/Business Case

Create the Value Proposition and Business Case for Integrating Primary Care & Public Health

Promote Integrated Public Health and Primary Care Quality Improvement Processes

Create Compelling Cases for Integration with Stakeholders at Local, State and Federal Levels

- ▶ Successes

Identify What Works at the National, State and Local Levels

Implement a Mechanism to Capture Successes and Best Practices

Tracks of Work (cont.)

● Measures

Identify Top
Population Health
Priorities Using
Agreed Upon Criteria

Develop and
Secure Agreement on
Key Measures for
Each Priority

Align Identification &
Utilization of Key
Measures Across All
Stakeholders/Payers

▶ Funding

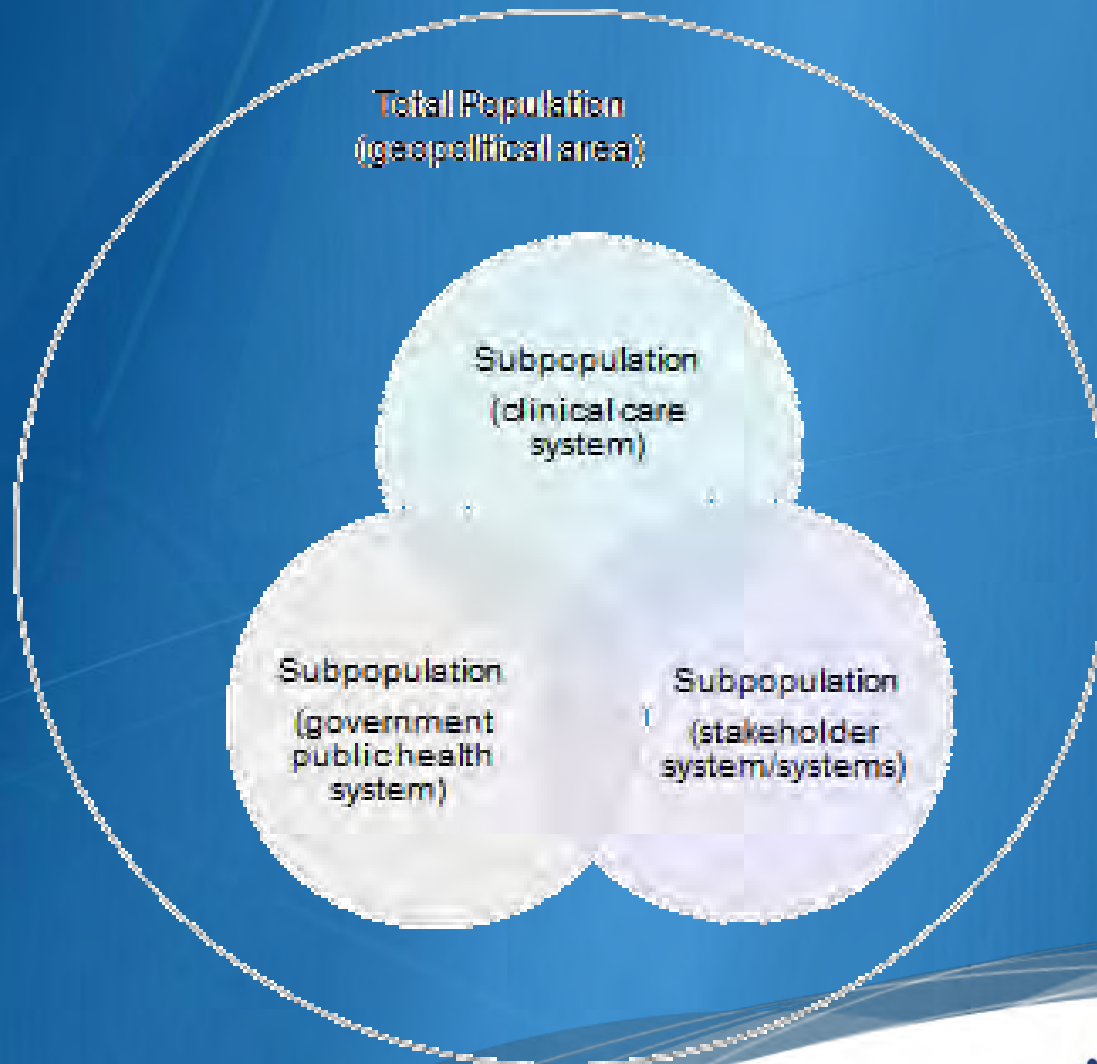
Promote Funding
Transformation to
Support
Integration Goals

Align Federal
Policies and Programs
with Scalable
Implementation

Develop and maintain a performance-oriented culture

- What do we measure?
- How do we measure?

Conceptual framework showing the relationships of total population and the subpopulations influencing health of the total population



Build and maintain a flexible organization

Seek Growth Through Partners

The Intersectoral Public Health System



Hold on to talent

Leadership committed to the mission and the people

Total Population Health

But I have promises to keep,
and miles to go before I sleep,
and miles to go before I sleep.

Robert L. Frost

Thank You

Contact Info

Jose Thier Montero

603-271-4617

jmontero@dhhs.state.nh.us



astho[™]

Department of Health & Human Services